

SHRI VRINDA

**IMPERIAL**  
LUXURIOUS HOMES

CRAFT  
YOUR  
HOME  
STORY







The spiritual essence of Krishna permeates every aspect of life in Vrindavan. The town is not just a physical place; it's a realm where devotees experience a deep connection with the divine. The air seems to carry the fragrance of devotion, and every corner resonates with the sound of hymns, chants, and the melodious tunes of Krishna's flute.

In Vrindavan, one can feel the presence of Krishna in the tranquil surroundings of sacred groves, where it's believed he performed his divine pastimes with his beloved Radha and the gopis. Devotees often meditate, chant mantras, and offer prayers in these serene spots, seeking closeness to the divine.

The temples of Vrindavan are not just architectural marvels but also spiritual sanctuaries where devotees can experience the presence of Krishna. Whether it's the bustling atmosphere of the Banke Bihari Temple or the peaceful ambience of the Radha Raman Temple, each temple offers devotees an opportunity to connect with Krishna through rituals, darshan (sacred viewing), and devotional service.

Ultimately, the spiritual feel of Krishna in Vrindavan is not just about the external manifestations but also about the internal transformation that occurs within devotees' hearts. It's about surrendering to the divine love of Krishna, experiencing blissful communion with him, and realizing one's true self in the process. In Vrindavan, the spiritual journey becomes a lived reality, where every moment is infused with the presence of the beloved Lord Krishna.



SHRI VRINDA  
**IMPERIAL**  
LUXURIOUS HOMES



## A LANDMARK PROJECT FOR FUTURE GENERATION!

Vrinda Imperial is a Luxurious residential project of 1 BHK & 2 BHK units in an enclave where everything is provided for. A gated community is rising to be a benchmark offering lifestyle to 150 families. An elaborate range of amenities, recreation facilities and green spaces and total security offers an enviable living in joy and contentment.





## Project Highlights

- MVDA-Approved Gated Community
- 24 x 7 Security
- Premium quality construction
- Vastu compliant
- No common walls
- Exclusive clubhouse
- 100% Power back-up
- Underground cabling
- Gated Community
- uPVC windows with mosquito mesh shutters
- Cable TV facility in each bedroom
- Adequate water supply
- 24 Hrs Underground water supply
- Water softening plant
- Hydro Pneumatic pressurized water system
- Rain water harvesting system
- Sewerage Treatment Plant





## STYLISH AND SURPRISINGLY AFFORDABLE!

The quality is supreme, the designing is integrated, and the builders' reputation is formidable. The 2 -bedroom residential units are still surprisingly affordable. Compared to prices in other parts of Vrindavan and Mathura, your hard earned money enjoys more value at Shri Vrinda Imperial













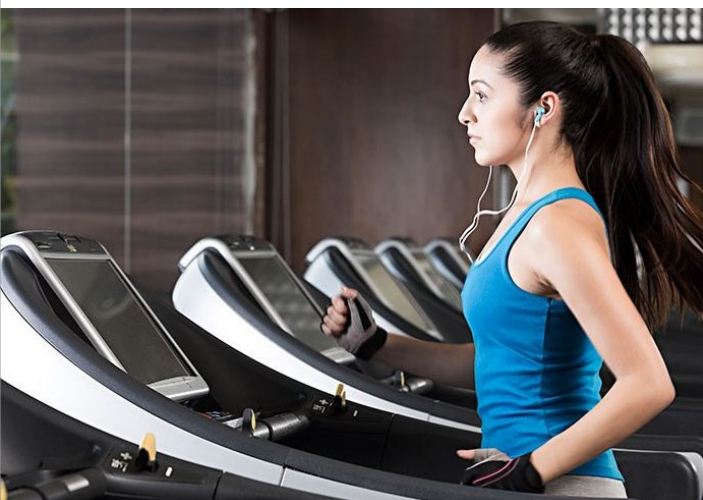
SHRI VRINDA  
**Imperial**  
LUXURIOUS HOMES







CLUB HOUSE WITH SWIMMING POOL



GYMNASIUM



INDOOR GAMES







# SPEND HOLIDAY RIGHT AT HOME!

When recreation of every kind is enjoyed at your home, why go on a holiday to resort or a club membership elsewhere? Community bonding is high at this environment where an exclusive clubhouse offers indoor, outdoor recreation and refined spaces for community events. Jog in the premises, work out at gym everyday to stay fit. Swim in the pool, play a game with your neighbour and party hard at spacious multi-purpose hall. Life is momentous in this extended family of Shri Vrinda Imperial.

## Exclusive Clubhouse

- Swimming pool with Toddlers pool & deck area
- Gymnasium with latest equipment
- Indoor games – Table Tennis, Billiards etc
- Multi-purpose Hall with kitchen
- Provision for Cafeteria
- Yoga & Meditation hall
- Provision for Supermarket
- Guest rooms



JOGGING

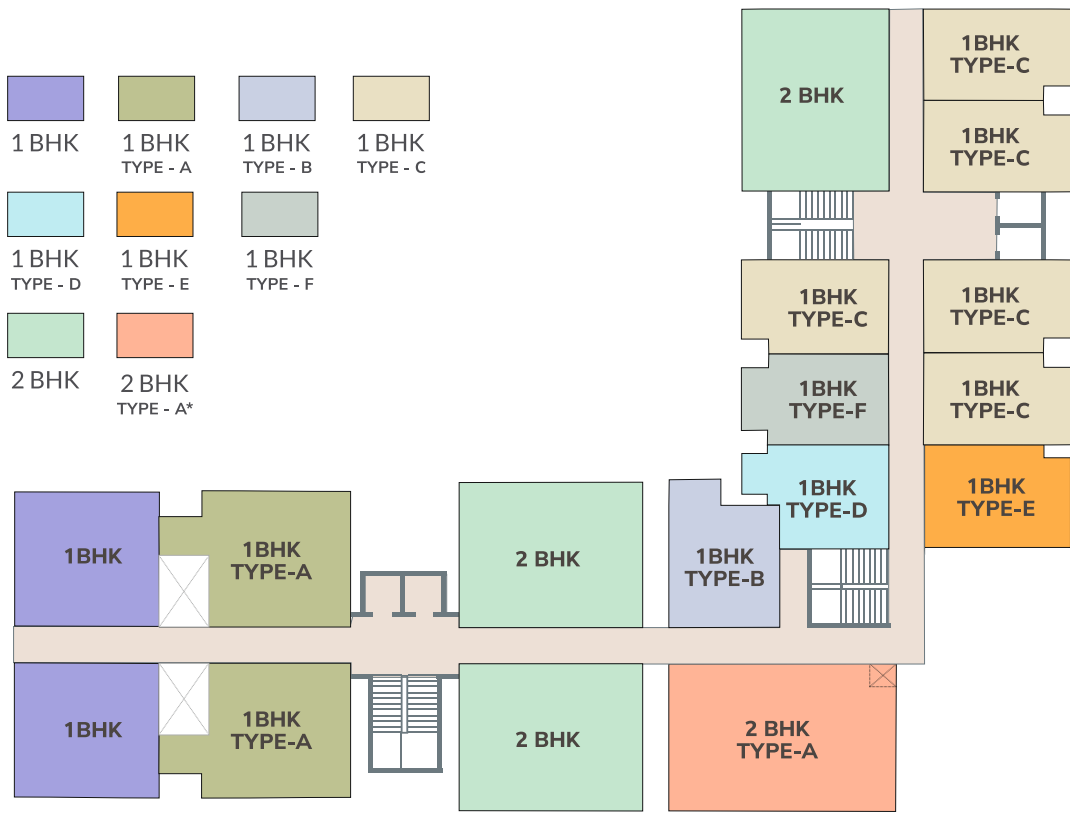




# TYPICAL FLOOR PLAN

1st Floor to 8th Floor

- |  |   |  |  |
|--|---|--|--|
|  1 BHK          |  1 BHK TYPE - A  |  1 BHK TYPE - B |  1 BHK TYPE - C |
|  1 BHK TYPE - D |  1 BHK TYPE - E  |  1 BHK TYPE - F |  |
|  2 BHK          |  2 BHK TYPE - A* |  |  |

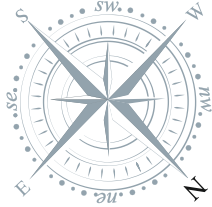


\* Not Available on Ground Floor



# MASTER PLAN

Ground Floor



SHRI VRINDA  
**IMPERIAL**  
LUXURIOUS HOMES



TO DELHI >

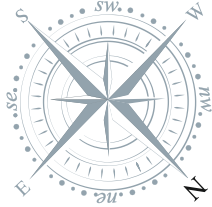
NH-19 ROAD

< TO MATHURA



# MASTER PLAN

First Floor to 8th Floor



SHRI VRINDA  
**IMPERIAL**  
LUXURIOUS HOMES



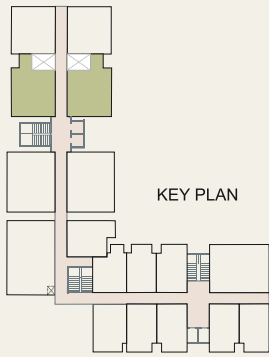
TO DELHI >

NH-19 ROAD

< TO MATHURA

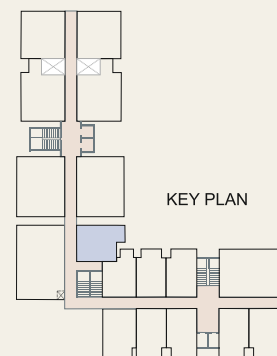


# INDIVIDUAL FLOOR PLAN



## 1BHK TYPE -A

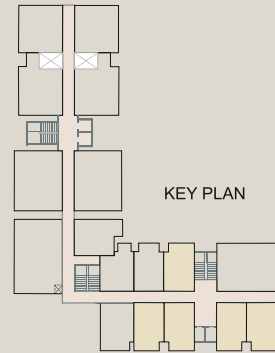
- Ground Floor**  
 Super Area - 722.25 Sq. Ft.  
 Covered Area - 535.00 Sq. Ft.
- 1st Floor to 8th Floor**  
 Super Area - 878.26 Sq. Ft.  
 Covered Area - 650.87 Sq. Ft.  
 Balcony Area - 115.87 Sq. Ft.



## 1BHK TYPE -B

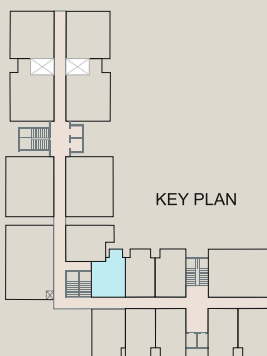
- Ground Floor**  
 Super Area - 540.00 Sq. Ft.  
 Covered Area - 400.00 Sq. Ft.
- 1st Floor to 8th Floor**  
 Super Area - 594.00 Sq. Ft.  
 Covered Area - 440.00 Sq. Ft.  
 Balcony Area - 40.00 Sq. Ft.





**1BHK TYPE - C**

- Ground Floor**  
 Super Area - 448.20 Sq. Ft.  
 Covered Area - 332.00 Sq. Ft.
- 1st Floor to 8th Floor**  
 Super Area - 534.60 Sq. Ft.  
 Covered Area - 396.00 Sq. Ft.  
 Balcony Area - 64.00 Sq. Ft.



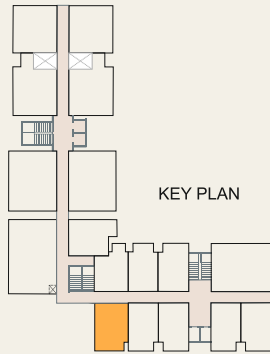
**1BHK TYPE - D**

- Ground Floor**  
 Super Area - 499.50 Sq. Ft.  
 Covered Area - 370.00 Sq. Ft.
- 1st Floor to 8th Floor**  
 Super Area - 540.00 Sq. Ft.  
 Covered Area - 400.00 Sq. Ft.  
 Balcony Area - 30.00 Sq. Ft.



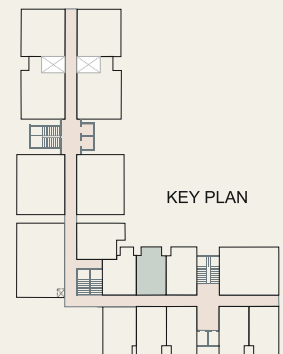
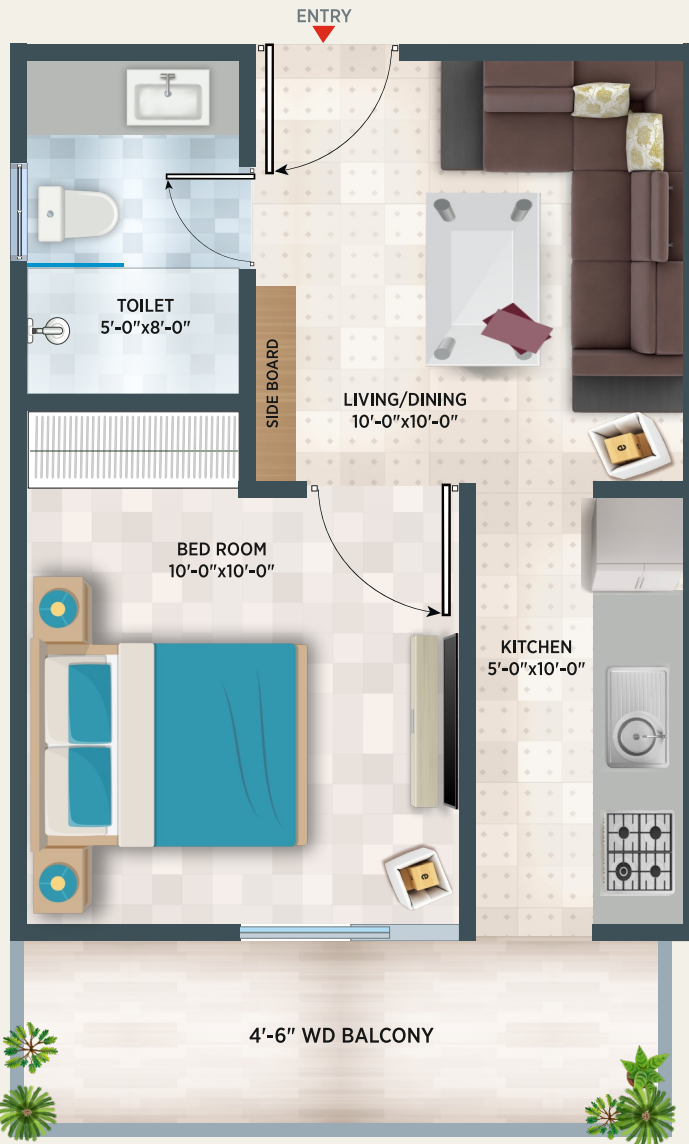


# INDIVIDUAL FLOOR PLAN



## 1BHK TYPE -E

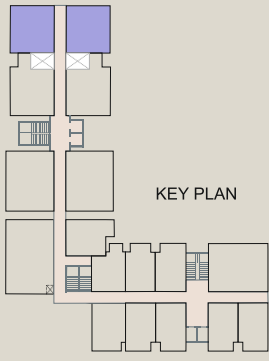
- Ground Floor**
- Super Area - 519.75 Sq. Ft.
- Covered Area - 385.00 Sq. Ft.
- 1st Floor to 8th Floor**
- Super Area - 613.91 Sq. Ft.
- Covered Area - 454.75 Sq. Ft.
- Balcony Area - 69.75 Sq. Ft.



## 1BHK TYPE -F

- Ground Floor**
- Super Area - 448.70 Sq. Ft.
- Covered Area - 332.00 Sq. Ft.
- 1st Floor to 8th Floor**
- Super Area - 515.70 Sq. Ft.
- Covered Area - 382.00 Sq. Ft.
- Balcony Area - 50.00 Sq. Ft.

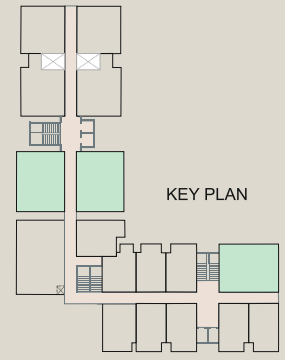
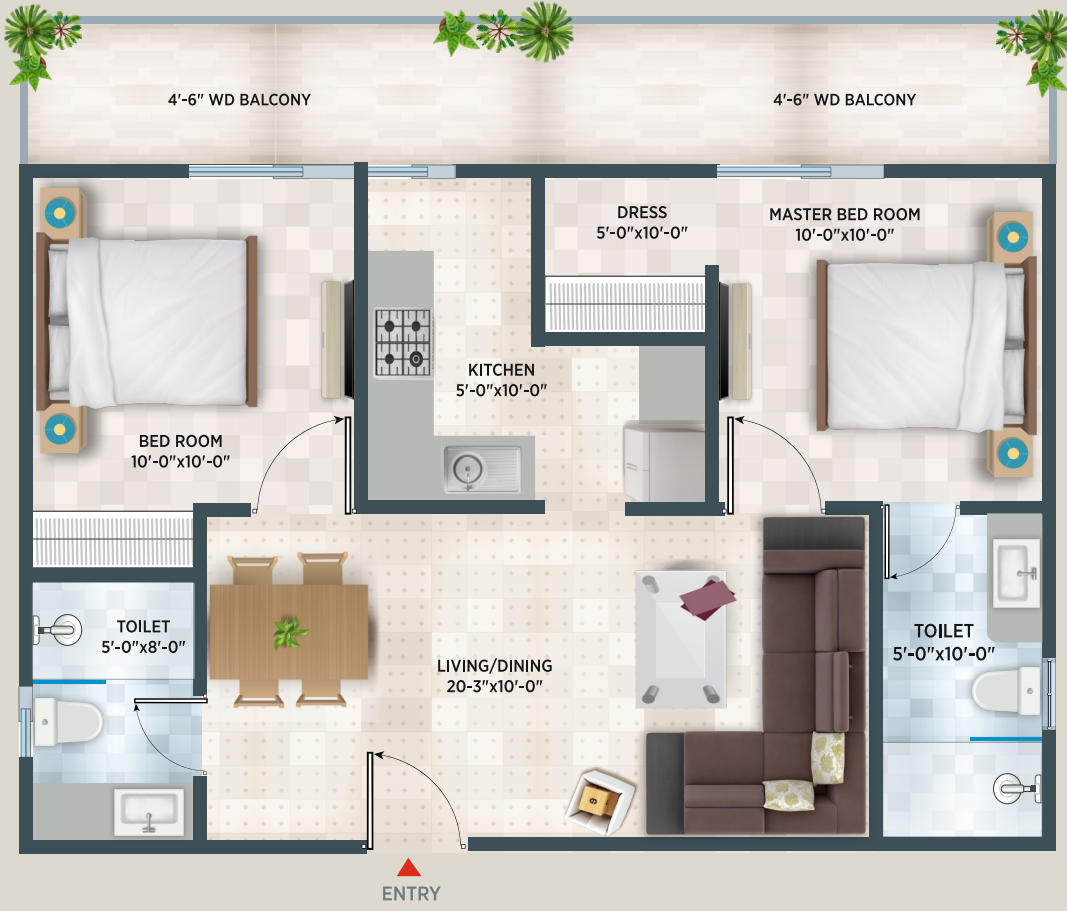




**1BHK**

**Ground Floor**  
 Super Area - 641.25 Sq. Ft.  
 Covered Area - 475.00 Sq. Ft.

**1st Floor to 8th Floor**  
 Super Area - 793.8 Sq. Ft.  
 Covered Area - 475.00 Sq. Ft.  
 Balcony Area - 113.00 Sq. Ft.



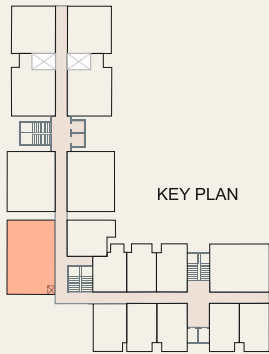
**2 BHK**

**Ground Floor**  
 Super Area - 976.05 Sq. Ft.  
 Covered Area - 723.00 Sq. Ft.

**1st Floor to 8th Floor**  
 Super Area - 1170.45 Sq. Ft.  
 Covered Area - 723.00 Sq. Ft.  
 Balcony Area - 144.00 Sq. Ft.



# INDIVIDUAL FLOOR PLAN



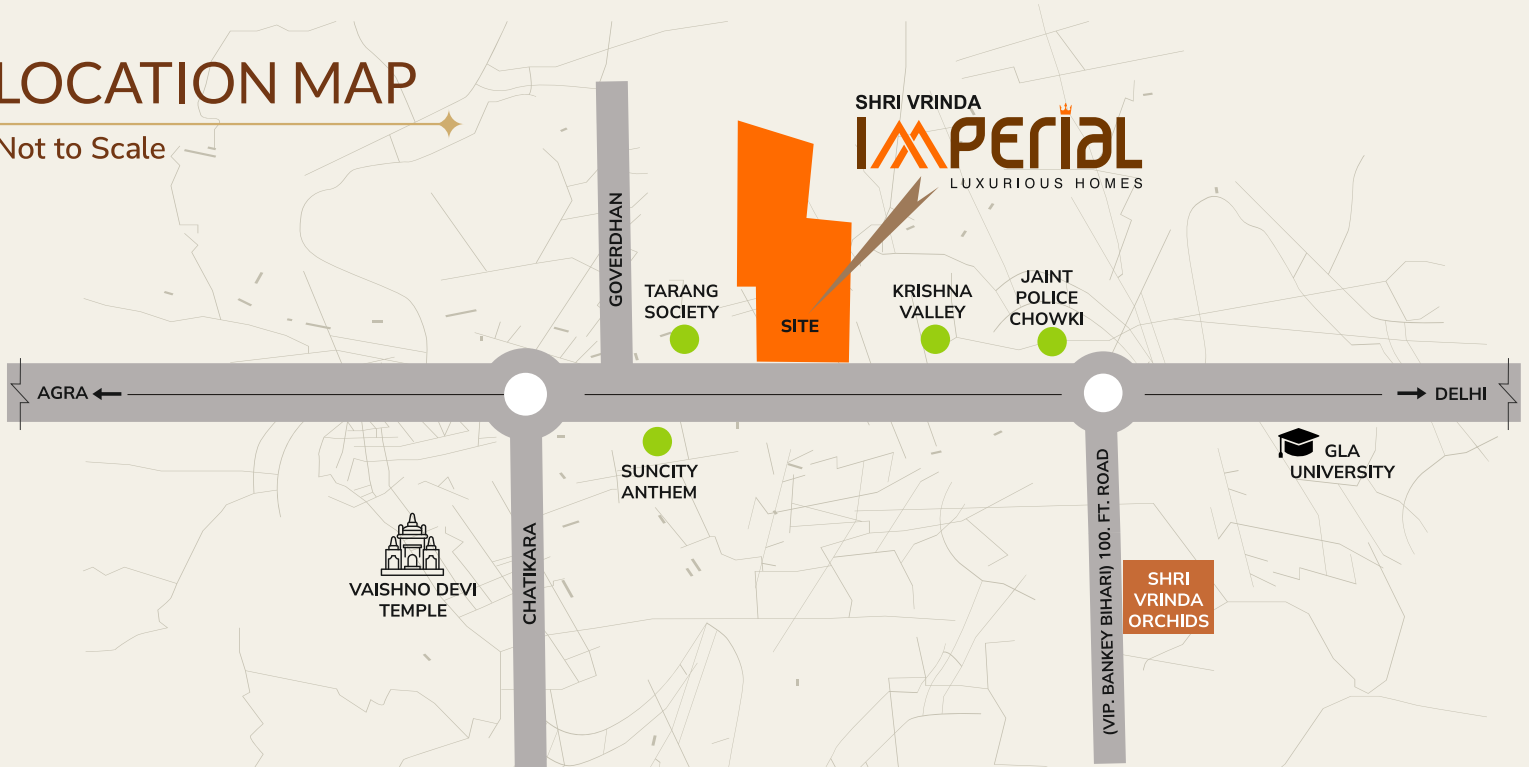
## 2 BHK TYPE-A

1st Floor to 8th Floor  
**Super Area** - 1363.50 Sq. Ft.  
**Covered Area** - 1010.00 Sq. Ft.  
**Balcony Area** - 272.00 Sq. Ft.



# LOCATION MAP

Not to Scale



## NEAR BY LOCATIONS

- MAA VAISHNO DEVI DHAM - 1.0 K.M.
- GOPINATH TEMPLE - 4.5 K.M.
- VRINDAVAN RLY. STN. - 3.3 K.M.
- PREM MANDIR - 2.0 K.M.
- MADAN MOHAN TEMPLE - 4.5 K.M.
- YAMUNA EXPRESSWAY - 12 K.M.
- ISCKON TEMPLE - 2.5 K.M.
- HOLY YAMUNA RIVER - 4.5 K.M.
- MATHURA CITY - 10 K.M.
- BANKEY BIHARI TEMPLE - 4.5 K.M.
- RANGNATH TEMPLE - 5.5 K.M.
- MATHURA RLY. STN. - 11 K.M.
- RADHA BALLABH MANDIR - 4.5 K.M.
- GOVERDHAN DHAM - 22 K.M.
- DELHI AIRPORT - 160 K.M.
- NIDHIVAN - 4.5 K.M.
- ON NH2 (DELHI AGRA) HIGHWAY
- JEWAR AIRPORT (UPCOMING) - 8.5 K.M.



# SPECIFICATIONS



## FLOORING

DRAWING / DINING / LOBBY

- Large Sized Vitrified tiles/ Slab

## BED ROOMS

- Branded Vitrified tiles

## BALCONIES

- Rustic porcelain tile



## WALLS & CEILING

WALLS

- Plastic Paint on POP Punning

CEILING

- Excursive POP False Ceiling



## TOILETS

- Porcelain Tiles upto Door Level
- Wall Hung W.C. with landed cistern
- Branded single lever CP Fittings
- Counter Wash Basin



## EXTERIOR FINISH

- Weather Proof Exterior Paint



## DOORS & WINDOWS

EXTERNAL DOOR

- Decorative Push Door with Polish

INTERNAL DOOR

- Push Door with Polish

## WINDOWS

- Electrode Aluminium Section/ UPVC Windows



## KITCHEN

- Kitchen

- Granite Slab with SS Sink

- Tiles above Slab

- Anti Skid Porcelain Tiles on floor



## ELECTRIFICATION

- ISI Copper Wiring in Concealed PVC conduit pipe
- Modular Switches
- MCB Distribution Panel



## RAILINGS

BALCONIES

- Stainless Steel / Glass Railing Stairs

- Stainless Steel Railing

Note: This brochure is purely a conceptual presentation and not a legal offering. The promoters reserve the right to make changes in elevation, specifications and plans as deemed fit.





Project Developed By

**OM DEVELOPERS**

Regd. Office :

14 , Jai Shree Colony Shahganj Darwaja  
Mathura (U.P.) 281001

Corp. Office :

Om Paradise, Masani Link Road Mathura - 281001

✉ [info@shrivrinda.com](mailto:info@shrivrinda.com)

Site : Near Hotel Clark Inn, Jait Police Station NH-19, Vrindavan, Mathura - 281121